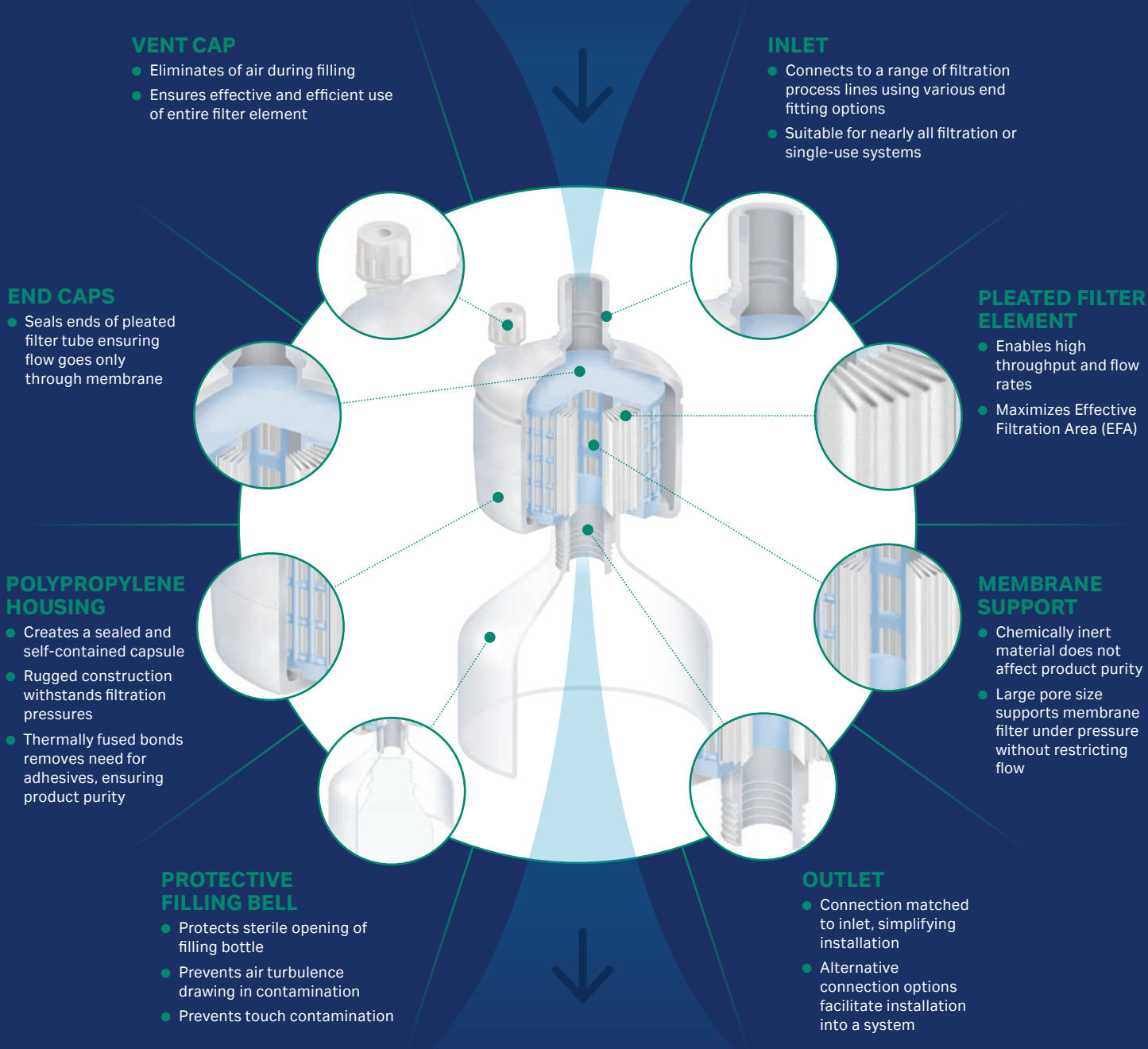


Ready-to-use capsule filters make large volume filtration fast and easy. Combining high efficiency media with innovative design features, single-use capsule filters enable safe, high throughput, and (where required) sterile membrane filtration for liquid, gas, and critical solutions.

## Anatomy of a capsule filter



## Filtration media

### VARIETY OF FILTER MATERIALS

- Options include:
- Glass micro fiber (GMF)
  - Polytetrafluoroethylene (PTFE)
  - Polyethersulphone (PES)
  - Polypropylene (PP)

### POLYPROPYLENE SUPPORT MATERIALS

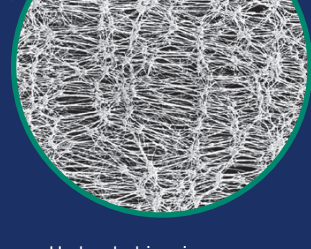
- Gives high mechanical strength
- Withstands shocks, back pressurization, multiple sterilizations and rigorous use
- Outstanding biocompatibility and stability

### GLASS MICRO FIBER



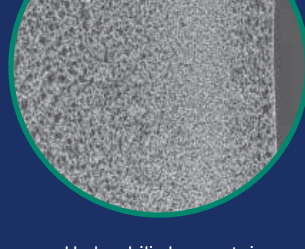
High particulate capture efficiency filter with excellent flow rates; very effective pre-filter

### POLYTETRAFLUOROETHYLENE



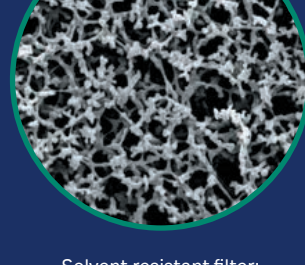
Hydrophobic microporous membrane; suitable for aggressive chemical and air/gas stream filtration

### POLYETHERSULPHONE



Hydrophilic low protein binding filter; suited to pharmaceutical growth media and biological filtration

### POLYPROPYLENE



Solvent resistant filter; effective for aggressive and viscous filtration and pre-filtration

## Capsule filters support many applications



Whatman™ capsule filters support a wide range of applications and sample types. Find the optimal Whatman filter for your needs with our filter selector.

[FIND MY FILTER](#)

[www.cytiva.com/whatman](http://www.cytiva.com/whatman)

Cytiva and the Drop logo are trademarks of Global Life Sciences IP Holdco LLC or an affiliate. Whatman is a trademark of Global Life Sciences Solutions USA LLC or an affiliate doing business as Cytiva. © 2020 Cytiva

All goods and services are sold subject to the terms and conditions of sale of the supplying company operating within the Cytiva business. A copy of those terms and conditions is available on request. Contact your local Cytiva representative for the most current information.

For local office contact information, visit [cytiva.com/contact](http://cytiva.com/contact)

CY17855-08Dec20-IG