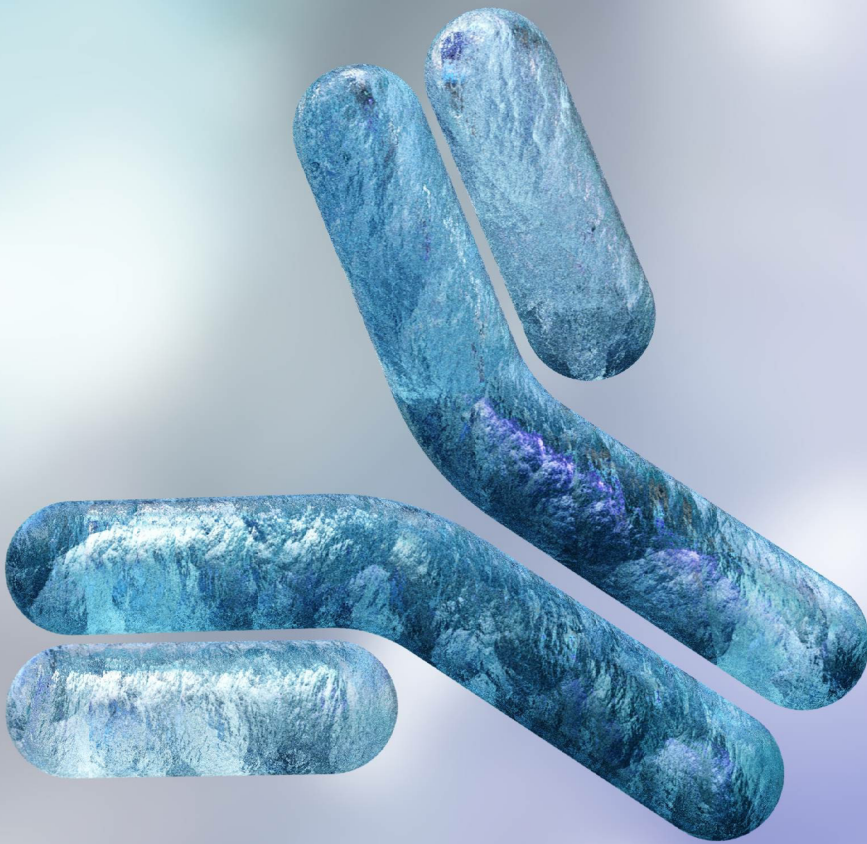


ANTIBODY PURIFICATION FOR CRITICAL ATTRIBUTES AND PROCESS DEVELOPMENT.

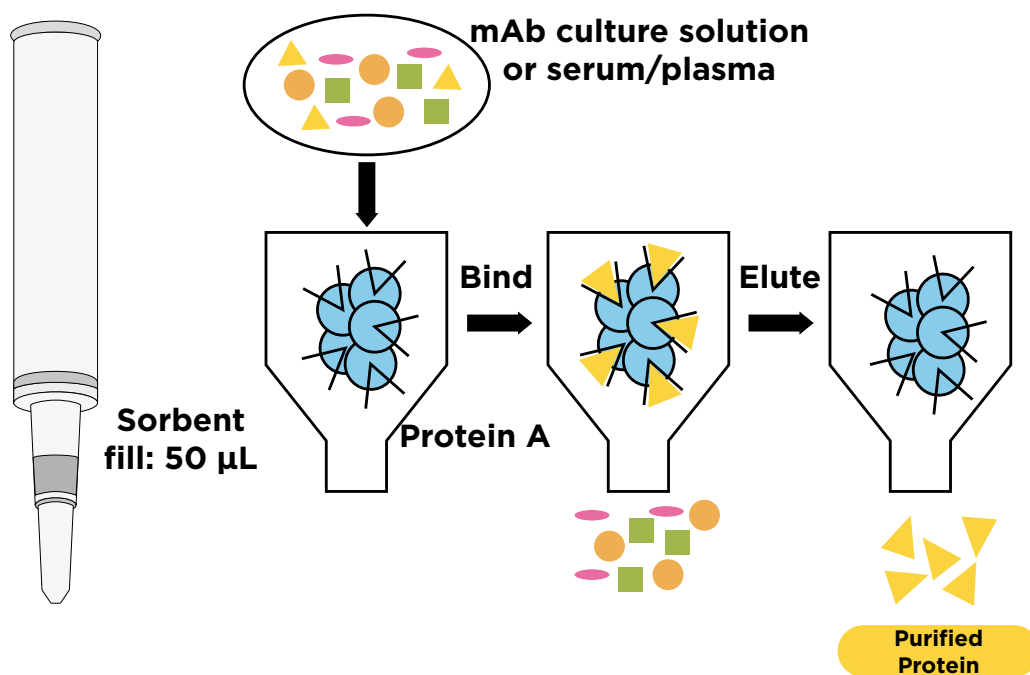
An innovation for antibody purification workflows leveraging a uniquely robust matrix with AffinEx™ Protein A Capture.



AFFINEX PROTEIN A CAPTURE.

AffinEx Protein A Capture is a protein A-bound, rigid polymeric sorbent with a polymethylmethacrylate (PMMA) matrix to provide structural stability when dry saving costs during shipping and handling. Designed for antibody purification from various cell culture samples, AffinEx's unique matrix removes the need for cold/wet storage and provides a shelf life of 24 months in ambient conditions without losing extraction efficacy.

AffinEx is available in Narrow Bore Extraction™ (NBE™) format to provide opportunities for an automated workflow. Tecan's NBE format is ANSI 96-place compatible allowing it to be used easily on existing instruments such as Resolvex® positive pressure processors.



Features:



Rigid protein A sorbent

Alkaline resistant recombinant protein A bound to a polymethylmethacrylate matrix provides a chemically stable sorbent with structural rigidity under wet and dry conditions.



Ambient long shelf life

AffinEx Protein A Capture comes with a 24-month shelf life under ambient conditions. Due to the structural stability and shelf life, AffinEx provides logistical advantages in packaging, shipping and storage to provide a cost-effective solution for antibody purification.



NBE format and beyond

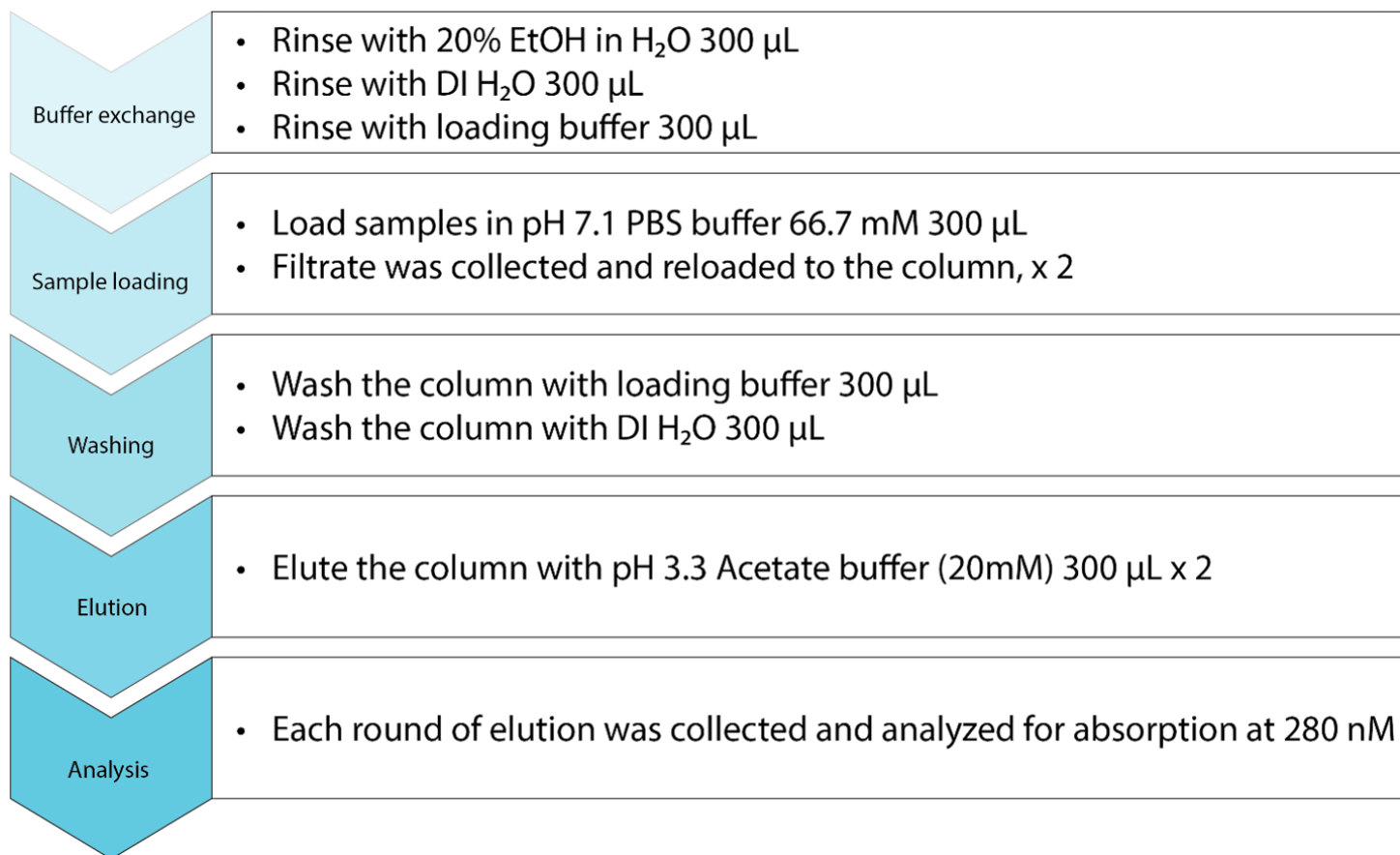
AffinEx is currently available in Narrow Bore Extraction (NBE) format filled with 50µL of protein A sorbent providing an extraction capacity of 1mg IgG per column. This offering will soon expand to Cerex® 1ml, 3ml and 6ml columns to satisfy various scales of antibody purification.



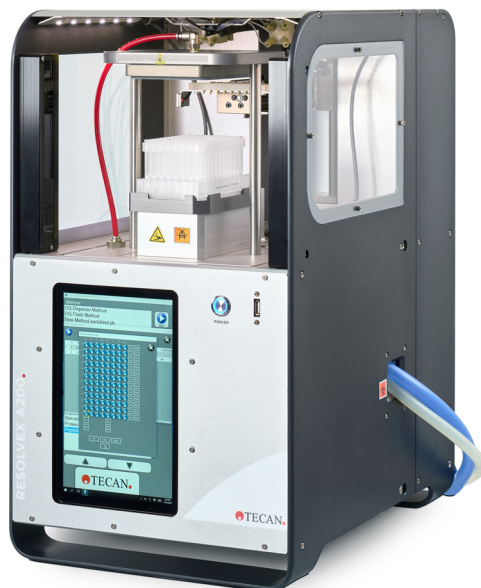
Automation-friendly

NBE columns are ANSI 96-place compatible allowing AffinEx to be used with Tecan positive pressure processors like the Resolvex® M10, A200 and i300 module for manual and automated scenarios to fit every lab's unique needs, saving valuable time and resources.

AUTOMATABLE WORKFLOWS.



The above sample preparation steps were performed using Tecan's Resolvex A200 96 (right) with gas-based positive pressure processing. Programmable pressure profiles on the A200 allows sample preparation to be automated and run at the push of a button providing additional walkaway time. Positive pressure can be used for sample loading, preparation and elution without needing to transfer racks or plates to another instrument during preparation. This removes the need for traditional separation techniques like centrifugation, vacuum processing and gravity flow.



Sample preparation for:

Binding assays



Product quality
(CE & LC)



Protein stability and
structure analyses



Product identity
(MS)



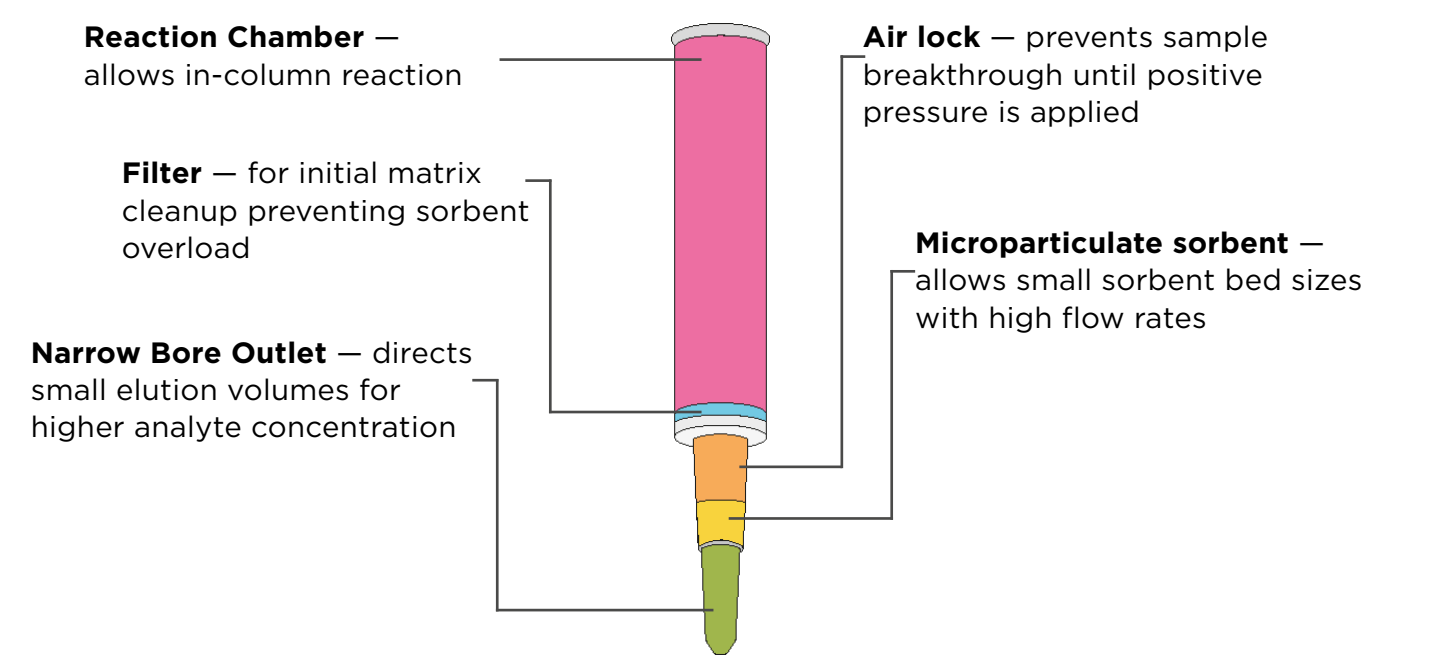
SPECIFICATIONS.

Formats:	Narrow Bore Extraction (NBE) columns and 96-well plates Cerex 1ml, 3ml and 6ml (*coming soon)
Sorbent fill volume:	50 µl
Experimental conditions:	Standard laboratory range of 15 °C to 32 °C (59 °F to 90 °F) The relative operating humidity must be 30% to 80% (non-condensing)
Storage conditions:	Standard laboratory range 15 °C to 32 °C (59 °F to 90 °F) Must be kept dry and protected from direct sunlight
Shelf life:	Up to 24 months after date of manufacture
Material number:	30234569 (NBE column); 30234565 (NBE 96-well plate)



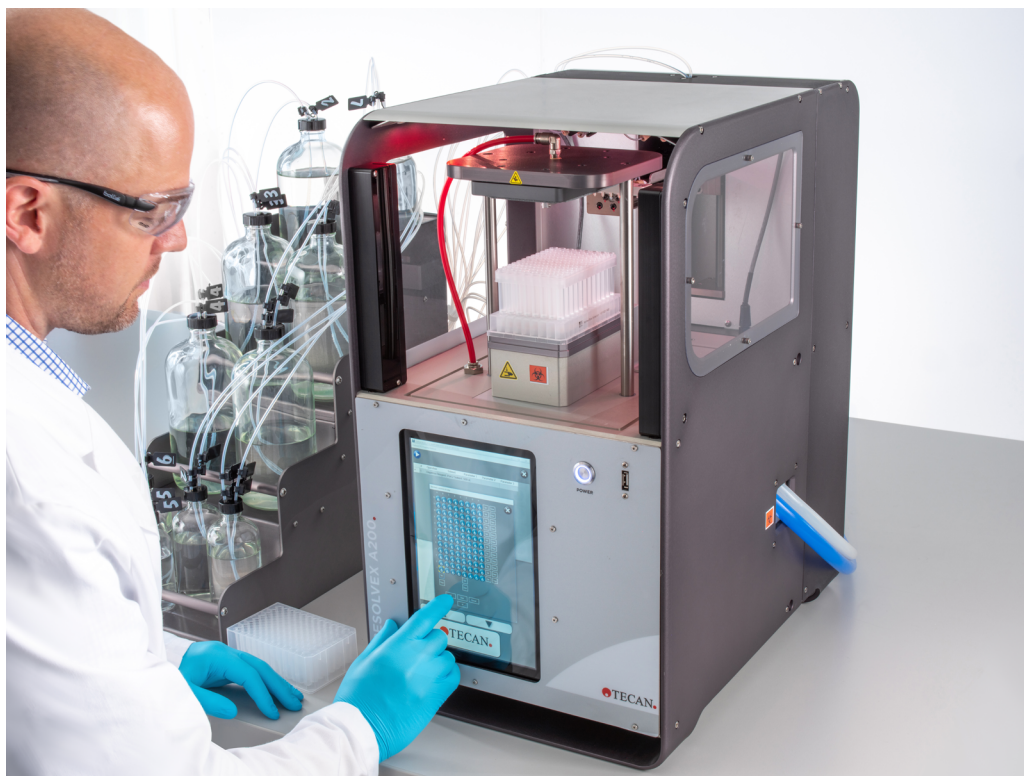
Tecan Narrow Bore Extraction.

Tecan’s patented Narrow Bore Extraction (NBE) technology combines a standard solid phase extraction column with a reaction vessel and air lock in one revolutionary format. NBE columns allow researchers to complete multiple sample preparation steps without additional tubes or plates reducing overall consumption.



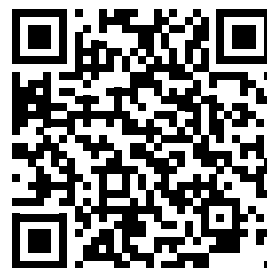
*Keep in touch for updates on Tecan’s Cerex line of AffinEx Protein A Capture by emailing customerservice@tecan.com or by following the link below.
<https://www.tecan.com/affinex-protein-a-capture>

AUTOMATE YOUR ANTIBODY PURIFICATION FOR HIGHER THROUGHPUT.



**Contact your local Tecan
representative or follow the
QR code to learn more.**

LEARN MORE



For Research Use Only. Not for use in diagnostic procedures.

.....
Australia +61 3 9647 4100 **Austria** +43 62 46 89 330 **Belgium** +32 15 42 13 19 **China** +86 21 220 63 206 **France** +33 4 72 76 04 80 **Germany** +49 79 51 94 170
Italy +39 02 92 44 790 **Japan** +81 44 556 73 11 **Netherlands** +31 18 34 48 17 4 **Nordic** +46 8 750 39 40 **Singapore** +65 644 41 886 **Spain** +34 93 595 25 31
Switzerland +41 44 922 89 22 **UK** +44 118 9300 300 **USA** +1 919 361 5200 **Other countries** +41 44 922 81 11
.....

Tecan Group Ltd. makes every effort to include accurate and up-to-date information within this publication, however, it is possible that omissions or errors might have occurred. Tecan Group Ltd. cannot, therefore, make any representations or warranties, expressed or implied, as to the accuracy or completeness of the information provided in this publication. Changes in this publication can be made at any time without notice. All mentioned trademarks are protected by law. In general, the trademarks and designs referenced herein are trademarks, or registered trademarks, of Tecan Group Ltd., Männedorf, Switzerland. A complete list may be found at <http://www.tecan.com/trademarks>. Product names and company names that are not contained in the list but are noted herein may be the trademarks of their respective owners. For technical details and detailed procedures of the specifications provided in this document please contact your Tecan representative.

Tecan is in major countries a registered trademark of Tecan Group Ltd., Männedorf, Switzerland.

© 2024 Tecan Trading AG, Switzerland, all rights reserved.

www.tecan.com

